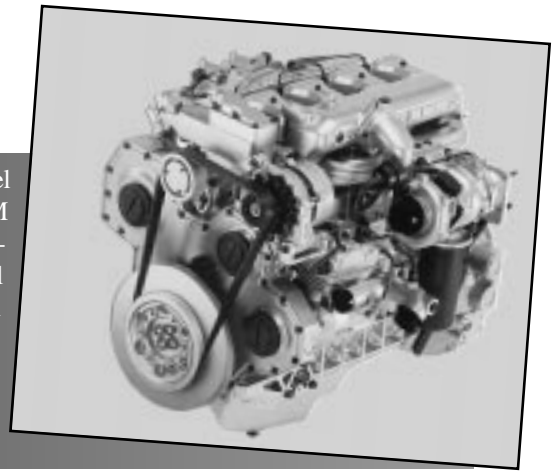


CONTINENTAL MWM

10 Series Engines

Setting industry standards since the turn of the century, Continental offers diesel engines from 47 to 80 horsepower. With the addition of the Continental MWM 10 Series, this range is extended to 215 horsepower. The 10 Series characteristics are desirable in industrial applications. These engines have no external tubes or hoses that cause costly leaks. All main accessories are gear driven which prevents down time due to belt failure. The engines have individual cylinder heads and wet removable cylinder liners for ease of service and less costly rebuilds. High power density along with low emissions output and low fuel consumption levels are attained by superior combustion chamber design.



Industrial Engine Ratings

Model	Cyl.	Bore (mm)	Stroke (mm)	Displ. (L)	HP@ 1500	HP@ 1800	HP@ 2000	RATED HORSEPOWER AT GIVEN RPM			
								HP@ 2200	HP@ 2400	HP@ 2600	Torque Ft.-Lbs. @ RPM
4.10NA	4	103	129	4.3	61	71	77	83	86	90	213 @ 1500
4.10 T	4	103	129	4.3	80	94	103	110	116	120	280 @ 1500
4.10 TCA	4	103	129	4.3	106	122	130	135	139	140	371 @ 1500
6.10 NA	6	103	129	6.45	90	103	114	121	130	136	314 @ 1500
6.10 T	6	103	129	6.45	118	140	154	163	168	172	413 @ 1500
6.10 TCA	6	103	129	6.45	158	184	197	206	211	215	553 @ 1500

NA= Natural Aspiration, T= Turbocharged, TCA= Turbocharged & Air to Air Aftercooled
Above ratings are maximum intermittent. Continuous rating is 90% of intermittent.

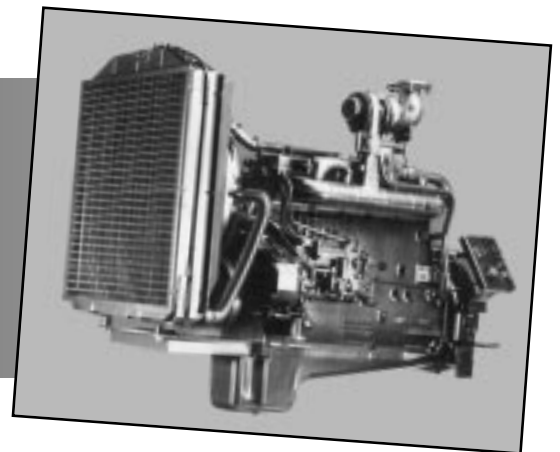
Stationary Generator Drive Ratings

Model	Cyl.	Bore (mm)	Stroke (mm)	Displ. (L)	(S)Kw@ 1500	(C)Kw@ 1500	(S)Kw@ 1800	(C)Kw@ 1800
4.10NA	4	103	129	4.3	46	41	53	48
4.10 T	4	103	129	4.3	73	66	88	79
4.10 TCA	4	103	129	4.3	87	78	104	94
6.10 NA	6	103	129	6.45	67	60	77	69
6.10 T	6	103	129	6.45	110	98	132	118
6.10 TCA	6	103	129	6.45	132	119	158	142

NA= Natural Aspiration, T= Turbocharged, TCA= Turbocharged & Air to Air After cooled (S)= Standby rating, (C)= Continuous rating

229 Series Engines

- Immediate start, even at low temperatures
- Simple low cost maintenance
- Good response level under partial or full load
- Individual cylinder heads
- Removable wet cylinder liner (replacement can be made without removing the engine)
- Perfect reliability
- High performance



Stationary Industrial Ratings

Model	Cyl.	Bore (mm)	Stroke (mm)	Displ. (L)	HP@ 1500	Kw@ 1500	HP@ 1800	Kw@ 1800	HP@ 2500	Kw@ 2500
D229-3	3	102	120	2.94	33	25	42	31	54	40
D229-4	4	102	120	3.92	44	33	56	41	72	54
D229-6	6	102	120	5.88	67	50	83	62	108	81
TD229EC6	6	102	120	5.88	108	81	129	96	152	113

Above ratings are maximum intermittent. Continuous rating is 90% of intermittent.

Stationary Generator Drive Ratings

Model	Cyl.	Bore (mm)	Stroke (mm)	Displ. (L)	(S)Kw@ 1500	(C)Kw@ 1500	(S)Kw@ 1800	(C)Kw@ 1800
D229-3	3	102	120	2.94	30	27	37	33
D229-4	4	102	120	3.92	40	36	49	44
D229-6	6	102	120	5.88	61	55	73	66
TD229EC6	6	102	120	5.88	81	74	101	92

(S)= Standby rating, (C)= Continuous rating