

THD3 18.2 HP Gasoline

WISCONSIN

■ LPG, and NG Options

Standard Features

- 2-Cylinder
- Air cooled
- In-line configuration
- Forged-steel crankshaft with tapered roller main bearings
- Heavy-duty cast-iron block
- Forged-steel connecting rods
- Cast-iron cylinders
- Centrifugal flyweight type governor
- Aluminum alloy pistons
- Heat resistant alloy steel exhaust valves
- Replaceable valve guides
- Solid state ignition
- 3.5 gallon fuel tank (13.2 liter)



Your Heavy-Duty Source of Power

Setting industry standards since 1909, Wisconsin continues to offer you a wide selection of air-cooled gasoline engines. Seven models allow you to choose from single-cylinder, twin-cylinder and four-cylinder engines with power ranging from 9.2 to 65.9 HP.

WISCONSIN CONSTRUCTION

Wisconsin engines are designed for those tough applications that require durability and long life reliability. The tapered roller bearings at each end

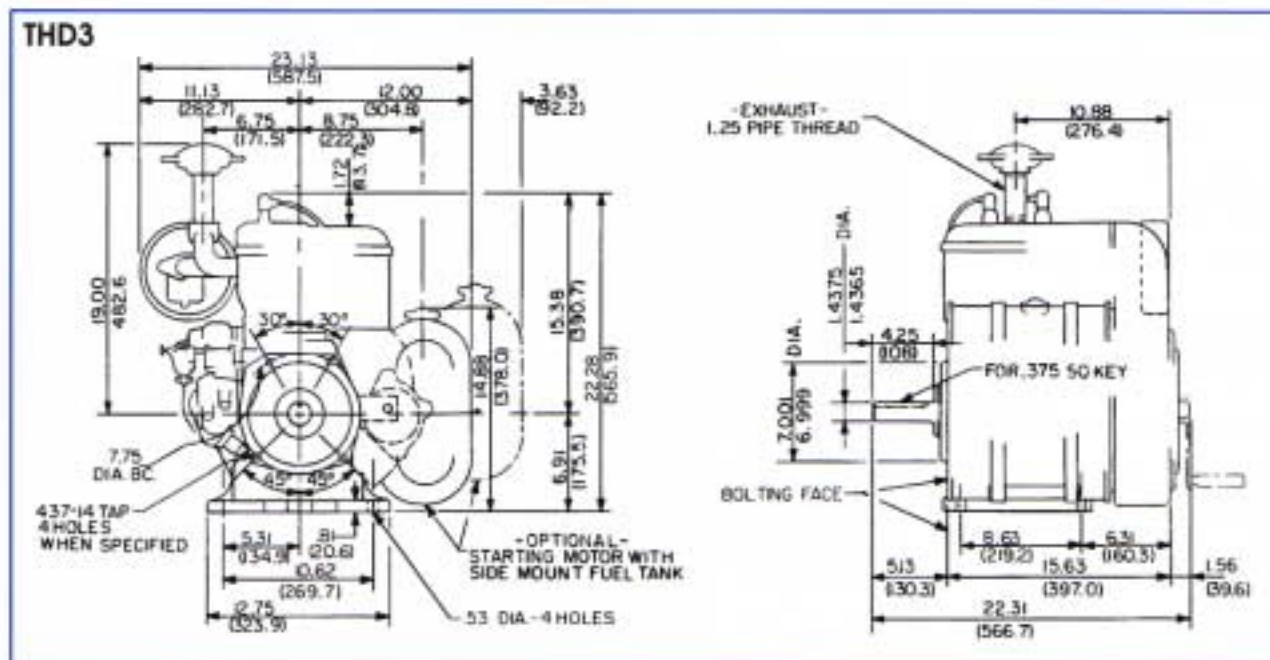
of the crankshaft offer a unique side load capability for a variety of industrial applications.

WORLDWIDE PARTS AND SERVICE

We back our engines with a worldwide service network. Experienced Wisconsin representatives are always ready to meet your needs.



**WISCONSIN
MOTORS, LLC**



Net Weight - Dry Standard Engine 216 lbs. (97.4 kg)

Bore3.25 in. (82.6 mm)
 Stroke.....3.25 in. (82.6 mm)
 Displacement53.9 cu. in. (883 cc)

RPM	HP	Kw	TORQUE	
			Fl. Lbs.	Kg-m
	THD3	THD3	THD3	THD3
1600	10.0	7.5	32.8	4.5
1800	11.7	8.7	34.1	4.7
2000	13.1	9.8	34.4	4.8
2200	14.2	10.6	33.9	4.7
2400	15.2	11.3	33.3	4.6
2600	16.4	12.2	33.1	4.6
2800	17.0	12.7	31.9	4.4
3000	17.5	13.1	30.6	4.2
3200	18.0	13.4	29.5	4.1
3400	18.2	13.6	28.1	3.9
3600	18.2	13.6	26.6	3.7

Power Output

Maximum dynamometer net brake horsepower of the basic engine corrected to a pressure reading of 29.31 in. Hg (99 kPa) dry barometer and temperature of 77° F (25° C) when tested in accordance with SAE Test Code J1349. Engine output can be demonstrated within 5% at the factory under standard rating conditions. Power will decrease 3.5% for each 1,000 ft. (305 M) above 500 feet and 1% for each 10° F above standard temperature of 77° F (25° C). For continuous operation, applications should be limited to 80% of power shown.

Options for Every Need

- Heavy-duty air cleaner
- SAE bell housings and drive hubs
- Clutch take-off
- Clutch reduction assemblies (in ratios of 2.3, or 4 to 1 with clockwise or counter-clockwise take-off shaft rotation)
- Special crankshaft extensions and stub shafts
- Electric fuel pump
- Larger capacity fuel tanks
- Heavy-duty mufflers
- High-temperature safety switch
- 12 volt, 30 amp flywheel alternator

Contact your Wisconsin representative for additional options.



WISCONSIN MOTORS, LLC

SALES OFFICE:

2020 Fletcher Creek Drive • Memphis, Tennessee 38133
 Phone: (901) 371-0353 • Toll Free: 800-932-2858

September 2003
 WM20263